



# FOCUS

# IN

THIS ISSUE  
FEBRUARY  
2021

# 2

Congratulations  
to Some of Our  
Newest Retirees

All New myERF  
Portal - Tell Us  
What You Think!

# 3

Condolences to our  
Recently Deceased  
Members

Pension Connection -  
2021 Upcoming Training  
Sessions

# 4

COVID-19  
Vaccine  
Resources in  
Texas

## DALLAS EMPLOYEES' RETIREMENT FUND *achieved a return* OF 5.8% IN 2020



Despite a challenging year for financial markets, the year 2020 has been extraordinary. The global pandemic was an event that caused the biggest quarterly drop in global GDP and increase in unemployment since the Great Depression. The drawdown in equity and credit markets was one of the fastest on record. The Employees' Retirement Fund of the City of Dallas (ERF) investment portfolio navigated the markets and generated a 5.8% (net of fees) for calendar year 2020. The total assets under management remained steady at \$3.66 billion. The Fund has performed well over longer time periods. Dallas ERF has a 5-year return of 8.03% which exceeds its actuarial rate of return of 7.25%.

Dallas ERF has a global, diversified conservative investment program. The best performing asset class in 2020 was Domestic Equity. Dallas ERF's Domestic Equity portfolio earned 16.4%. Both Global Equity and International Equity had a return of 16.1% and 15.6%, respectively for 2020. Global Low Volatility

Equity had a return of (-0.01%) lagging the benchmark MSCI ACWI Minimum Volatility Index of 2.7%.

The Fund's Real Estate investments generated (-1.7%) for the year. The Real Estate investments consist of publicly traded real estate called Real Estate Investment Trusts (REITs) as of 12/31/2020 and national private core real estate funds as of 9/30/2020. Global Listed Infrastructure had a difficult year with a (-25.8%) but was better than the benchmark of (-31.2%). The private equity returns always lag a quarter behind, so the last reported quarter is September 30, 2020. As of September 30, 2020, the investments in Private Equity had a 1-year return of 3.0% and a 5-year return of 9.9%.

Fixed Income is 30% of the ERF investment portfolio. Our investment in Global Fixed Income returned 8.6% and exceeded the Bloomberg Aggregate benchmark of 7.5% in 2020. Our high yield investments posted a return of 6.6% and the Opportunistic Credit posted a return of 5.2%.

The Dallas ERF Board consists of seven dedicated board members with over 75 year of investment and benefit experience. I want to thank the Board members for their discipline, patience, and investment expertise as the markets continue to evolve. As pension fund investors, we must remember to focus on the long-term investment horizon. I would also like to take this opportunity to commend the ERF staff for their diligence and commitment to excellent service to employees and pensioners.

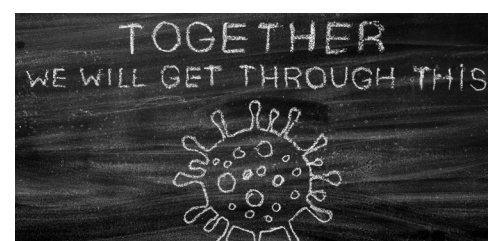
In summary, active members, terminated employees with a vested pension and retirees should feel confident that ERF remains sound and your retirement benefits are safe and secure. We welcome your questions, comments, or suggestions.

## UPDATED COVID-19 RESOURCES FOR CITY OF DALLAS EMPLOYEES

City of Dallas (COD) employees have a new healthcare provider as of January 1st. Blue Cross Blue Shield offers many of the same benefits as Cigna did including the Employee Assistance Program (EAP). You can find information about the new EAP provider on the COD Employee Resources page.

Other resources you can find on the Employee Resources page include: COVID-19 Testing Sites; Essential Employee Childcare Assistance FAQ and the COVID-19 Leave Request Form - Civilian employees in need of leave related to COVID-19 may be eligible for paid leave. **CLICK HERE** to visit the COD Employee Resource Page.

*continued on page 4*



The Employees' Retirement Fund of the City of Dallas is a defined benefit plan for City of Dallas' non-uniformed, permanent full and part-time employees.

"It is our mission to provide retirement benefits and superior service to advance the financial security of our members."

# CONGRATULATIONS TO SOME OF OUR NEWEST RETIREES

EMPLOYEES WHO RETIRED IN NOVEMBER & DECEMBER 2020 and AGREED TO LET US SHARE THE NEWS

DEPARTMENT	SERVICE	DEPARTMENT	SERVICE	DEPARTMENT	SERVICE
<b>Development Services</b>		<b>Library, cont.</b>		<b>Police</b>	
Margaret A. Fiskell	20	Nancy C. Beck	7	Betty D. Wafer	37
		Sherry D. Woodall	6	Barabara J. Cooper	36
<b>Equipment &amp; Fleet Management</b>		Chia L. Chung	5		
Jason A. Pruitt	30			<b>Public Works &amp; Transportation</b>	
		<b>Management Services</b>		Liong T. So	20
<b>Fire</b>		Shawn C. Williams	27		
Charlotte A. Lewis	4	Oliver J. Johnson III	22	<b>Sanitation Services</b>	
				Mario Munoz	24
<b>Library</b>		<b>Office of Economic Development</b>		Voyd J. Green, Jr.	21
Jaqueline D. Garner	22	Betty J. Artis	23		
Sammie S. Lee	16			<b>Water Utilities</b>	
Carolyn A. Loss-Cutler	16	<b>Park &amp; Recreation</b>		Nathan E. Kirksey	32
Cheryl A. Paulk	9	Pamela Westerheide	10	Barry E. Newell	19
				Ben A. Stephenson	15

## TELL US WHAT YOU THINK ABOUT THE NEW myERF PORTAL!

We have 2,967 Active & Deferred City of Dallas employees registered for a new myERF account! The new myERF portal has several new features to make it easier than ever to access your pension benefit information, estimate your benefit at retirement and get your questions answered.

A few of the new features of the myERF portal include:

- Access for more employees! All ERF members now have up to the minute access to their benefit information.
- New Pension Estimator for active and deferred members
- New Buyback and BuyForward Estimator for active members
- Consolidated accounts for members who are active members and also receiving a pension from their spouse.



All members are required to re-register for a myERF account. **CLICK HERE** and register for your new myERF account. For questions use our help hotline number, 214-580-7738, or email us at [retirement\\_fund@dallaserf.org](mailto:retirement_fund@dallaserf.org).

### GIVE US YOUR THOUGHTS ON THE NEW myERF

With the launch of the new myERF fully underway, we would like to know what you think of the new myERF portal and how your experience has been so far. Please **CLICK HERE** to take our short survey. We value your feedback!

# OUR SINCERE SYMPATHY

TO THE FAMILIES OF OUR DECEASED MEMBERS *from*  
NOVEMBER & DECEMBER 2020

DEPARTMENT	AGE	DEPARTMENT	AGE	DEPARTMENT	AGE
<b>Development Services</b>		<b>Park &amp; Recreation, cont.</b>		<b>Sanitation Services, cont.</b>	
Robert L. Templeton	71	Theresa A. Wortham	68	Alice F. Wilson	75
Danny R. Sipes	58	Ramon E. Perez	50	Jeffrey B. Williams	58
		Travis B. Anderson	42		
<b>Equipment &amp; Building Services</b>		<b>Police</b>		<b>Street Services</b>	
Mary E. Rollins	94	Ronald M. Hubner	67	Lester Henderson	77
Walter R. Dofler	58	San Juanita C. Garcia	60		
<b>Event Services &amp; Cultural Affairs</b>		<b>Sanitation Services</b>		<b>Water Utilities</b>	
Phyllis A. Jeff	59	Marvin L. Scott	88	Elbert W. Box	73
		Norman R. Hallmark	84	Steven L. Smith	54
<b>Park &amp; Recreation</b>		Richard R. Roscoe	80	Juan Lazalde	52
Alfonso O. Perez	68				



## 2021 SPRING TRAINING SCHEDULE

We will be offering all five pre-retirement sessions this March. All sessions will be offered live and recorded to ensure all members have access anytime, anywhere. Sessions will be held in GoToWebinar from 11a - 1p with a live presentation and Q&A with speakers.

If you would like to stay updated on the next series of live sessions, visit [www.dallaserf.org/active-employees](http://www.dallaserf.org/active-employees) and join our mailing list. ERF will also notify members on the website, [www.dallaserf.org](http://www.dallaserf.org) and on Facebook @DallasERF.

To register for upcoming sessions or access pre-recorded sessions, [CLICK HERE](#).

### UPCOMING WEBINARS

#### PRE-RETIREMENT WEBINARS

March 2nd - Health Benefits

March 11th - Your Pension Benefit

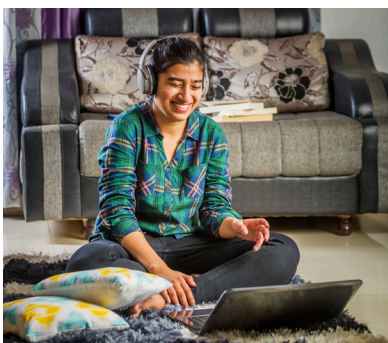
March 19th - Taxes After Retirement

March 4th - Social Security & Your Pension

March 16th - Fidelity Investments

#### 2021 ERF SUMMER SESSIONS

ERF will be available virtually for Summer Sessions in 2021! For more information or to schedule a Summer Session, contact Melissa Harris, Chief of Communications at [mharris@dallaserf.org](mailto:mharris@dallaserf.org).



03  
DECEASED  
MEMBERS



# COVID-19 RESOURCES, CONT.

## WHEN CAN I GET THE VACCINE

*continued from page 1*

The COVID-19 vaccine is now being distributed nationwide and vaccination hubs have opened all over Texas. This month Dallas County saw its first hub open at Fair Park. Most Texas counties have at least one hub for residents to get the COVID-19 vaccine.

We are in Phase 1 of the vaccine roll-out which means to register for the vaccine you must be in either Phase 1A, Tier 1 or Tier 2 or Phase 1B to qualify. As more vaccine doses become available, additional phases will be added until all residents are covered.



### AM I ELIGIBLE TO REGISTER?

Phase 1 of the vaccine roll-out covers front-line workers, residents 65 and older and residents 16 and older with medical conditions that put them at a higher risk. Click this link for a full list of qualifying medical conditions,

<https://www.cdc.gov/coronavirus/2019-ncov/need-extra-precautions/people-with-medical-conditions.html>

Visit your county's website to check eligibility and register for the vaccine. In most cases, the county will confirm your registration and contact you when an appointment becomes available. Click the link below to visit your county's COVID-19 vaccine information page. If your county is not listed, click the link for statewide vaccination hubs to find the one closest to you.

#### DALLAS COUNTY

<https://www.dallascounty.org/covid-19/covid-19-vaccination.php>

#### TARRANT COUNTY

<https://www.tarrantcounty.com/en/public-health/disease-control---prevention/COVID-19/COVID-19-Vaccine.html>

#### DENTON COUNTY

<https://storymaps.arcgis.com/stories/7c802a848ce04a0999f9831f2ddaaf2e>

#### COLLIN COUNTY

[https://www.collincountytx.gov/healthcare\\_services/Pages/COVID19vaccines.aspx](https://www.collincountytx.gov/healthcare_services/Pages/COVID19vaccines.aspx)

#### STATEWIDE VACCINATION HUBS BY COUNTY

<https://dshs.texas.gov/coronavirus/immunize/vaccine-hubs.aspx>



### WHICH PHASE AM I IN?

#### PHASE 1A, TIER 1:

Paid and unpaid workers in hospital settings working with patients who are positive or at high risk for COVID-19, long-term care staff & residents of long-term care facilities, EMS providers who engage in 9-1-1 emergency services and home health care workers, including hospice care, who directly interface with vulnerable and high-risk patients.

#### PHASE 1A, TIER 2:

Direct care staff in freestanding emergency medical care facilities and urgent care clinics & outpatient care, community pharmacy staff, public health and emergency response staff directly involved in administration of COVID-19 testing and vaccinations, Last responders who provide mortuary or death services and school nurses who provide health care to students and teachers.

#### PHASE 1B:

People 65 years of age and older and People 16 years of age and older at increased risk for severe illness from the virus that causes COVID-19.

#### EMPLOYEES' RETIREMENT FUND

1920 MCKINNEY AVENUE, 10th FLOOR  
DALLAS, TX 75201  
TELEPHONE: 214-580-7700  
FAX: 214-580-3515  
WWW.DALLASERF.ORG

#### BOARD of TRUSTEES

##### CHAIR

HENRY TALAVERA  
VICE-CHAIR  
JOHN W. PEAVY III

##### MEMBERS

CARLA D. BREWER  
SUNIL KING  
LEE KLEINMAN  
TINA RICHARDSON  
MARK S. SWANN

#### EXECUTIVE DIRECTOR

CHERYL D. ALSTON

